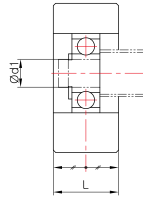
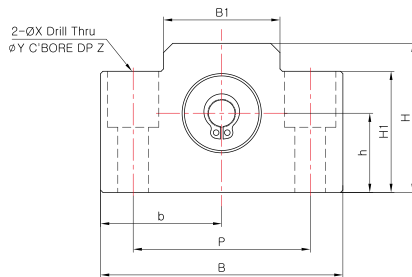


SUPPORT UNIT : BF SERIES

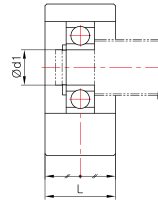
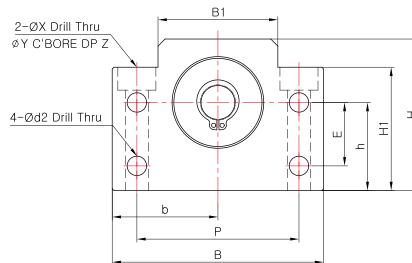


SUPPORT UNIT FOR BALL SCREW (GENERAL LOAD)

BF6 ~ BF8



BF10 ~ BF40



Dimensions

Model	Sizes (mm)														Mass (g)	Snap-ring	Bearing
	Body																
	d1	L	B	H	b±0.02	h±0.02	B1	H1	E	P	d2	X	Y	Z			
BF6/BF8	6	14	52	32	26	17	25	26	-	38	-	6.6	11	12	120	C6	606ZZ
BF10	8	20	60	39	30	22	34	32.5	15	46	5.5	6.6	10.8	5	260	C8	608ZZ
BF12	10	20	60	43	30	25	34	35	18	46	5.5	6.6	10.8	6.5	270	C10	6000ZZ
BF15	15	20	70	48	35	28	40	38	18	54	5.5	6.6	11	6.5	310	C15	6002ZZ
BF17	17	23	86	64	43	39	50	55	28	68	6.6	9	14	8.5	680	C17	6203ZZ
BF20	20	26	88	60	44	34	52	50	22	70	6.6	9	14	8.5	710	C20	6004ZZ
BF25	25	30	106	80	53	48	64	70	33	85	9	11	17.5	11	1340	C25	6205ZZ
BF30	30	32	128	89	64	51	76	78	33	102	11	14	20	13	1880	C30	6206ZZ
BF35	35	32	140	96	70	52	88	79	35	114	11	14	20	13	2080	C35	6207ZZ
BF40	40	37	160	110	80	60	100	90	37	130	14	18	26	17.5	3100	C40	6208ZZ