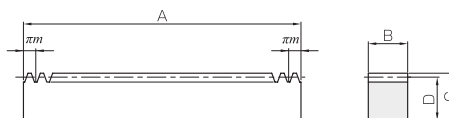


Specifications	
Precision grade	KHK R 001 grade 4
Gear teeth	Standard full depth
Pressure angle	20°
Material	S45C
Heat treatment	Stress relief annealing
Tooth hardness	less than 95HRB



RF

Catalog No.	Module	No. of teeth	Shape	Total length	Face width	Height	Height to pitch line	Allowable force (N)		Allowable force (kgf)		Weight (kg)
				A	B	C	D	Bending strength	Surface durability	Bending strength	Surface durability	
<b>SRF0.5-300</b>	<b>m0.5</b>	191	RF	300.02	5	12	11.5	240	39.6	24.4	4.04	0.14
<b>SRF0.8-300</b>	<b>m0.8</b>	119	RF	299.08	8	12.3	11.5	613	108	62.5	11.0	0.22
<b>SRF1-300</b> <b>SRF1-500</b> <b>SRF1-1000</b>	<b>m1</b>	96 159 318	RF	301.59 499.51 999.03	10	12	11	958	177	97.7	18.0	0.26 0.43 0.86
<b>SRF1.5-300</b> <b>SRF1.5-500</b> <b>SRF1.5-1000</b> <b>SRF1.5-1500</b> <b>SRF1.5-2000</b>	<b>m1.5</b>	64 106 212 320 435	RF	301.59 499.51 999.03 1507.96 2049.88	15	20	18.5	2160	421	220	42.9	0.66 1.09 2.18 3.28 4.47
<b>SRF2-300</b> <b>SRF2-500</b> <b>SRF2-1000</b> <b>SRF2-1500</b> <b>SRF2-2000</b>	<b>m2</b>	48 80 160 240 326	RF	301.59 502.65 1005.31 1507.96 2048.31	20	25	23	3830	775	391	79.0	1.09 1.82 3.63 5.45 7.40
<b>SRF2.5-300</b> <b>SRF2.5-500</b> <b>SRF2.5-1000</b> <b>SRF2.5-1500</b> <b>SRF2.5-2000</b>	<b>m2.5</b>	38 64 128 192 261	RF	298.45 502.65 1005.31 1507.96 2049.88	25	30	27.5	5990	1240	611	127	1.61 2.71 5.43 8.14 11.1
<b>SRF3-300</b> <b>SRF3-500</b> <b>SRF3-1000</b> <b>SRF3-1500</b> <b>SRF3-2000</b>	<b>m3</b>	32 53 106 160 217	RF	301.59 499.51 999.03 1507.96 2045.17	30	35	32	8620	1820	879	186	2.27 3.76 7.53 11.4 15.4
<b>SRF4-500</b> <b>SRF4-1000</b> <b>SRF4-1500</b> <b>SRF4-2000</b>	<b>m4</b>	40 80 120 163	RF	502.65 1005.31 1507.96 2048.31	40	45	41	15300	3330	1560	339	6.47 12.9 19.4 26.4
<b>SRF5-500</b> <b>SRF5-1000</b> <b>SRF5-1500</b> <b>SRF5-2000</b>	<b>m5</b>	32 64 96 130	RF	502.65 1005.31 1507.96 2042.04	50	50	45	24000	5300	2440	540	8.88 17.8 26.6 36.1
<b>SRF6-500</b> <b>SRF6-1000</b> <b>SRF6-1500</b> <b>SRF6-2000</b>	<b>m6</b>	26 53 80 108	RF	490.09 999.03 1507.96 2035.75	60	60	54	34500	7740	3520	789	12.5 25.4 38.4 51.8
<b>SRF8-500</b> <b>SRF8-1000</b>	<b>m8</b>	20 40	RF	502.66 1005.31	75	75	67	44200	10400	4510	1060	19.8 39.7
<b>SRF10-1000</b>	<b>m10</b>	32	RF	1005.31	90	80	70	66300	16100	6770	1640	49.7

- [Caution on Product Characteristics]
- ① The allowable forces shown in the table are the calculated values according to the assumed usage conditions. Please see page 373 for more details.
  - ② The backlash of racks differ depending on the size of the mating pinion. Please calculate the backlash from the backlash value of the mating pinion. Also, please refer to the data in the section called 'Backlash of Rack Tooth (Amount of Tooth Thinning)' on Page 375.

- [Caution on Secondary Operations]
- ① Please read "Caution on Performing Secondary Operations" (Page 376) when performing modifications and/or secondary operations for safety concerns. Haguruma Kobo, the KHK's system for quick modification of KHK stock gears is also available.
  - ② If gear tooth hardening, or thermal refining, is applied, the decarburization layer (approx. 0.5 mm thickness) on the rectangular surfaces cannot have the hardness you designate.