

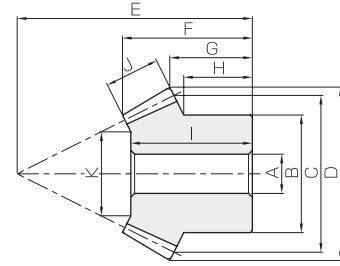


# SB · SBY Steel Bevel Gears

Module 1.5 ~ 6



Specifications	
Precision grade	JIS B 1704 grade 3
Gear teeth	Gleason
Pressure angle	20°
Material	S45C
Heat treatment	—
Tooth hardness	less than 194HB



B3

Catalog No.	Gear ratio	Module	No. of teeth	Shape	Bore	Hub dia.	Pitch dia.	Outside dia.	Mounting distance	Total length	Crown to back length	Hub width
					A <sub>H7</sub>	B	C	D	E	F	G	H
<b>SB1.5-6015</b> <b>SB1.5-1560</b>	4	<b>m1.5</b>	60	B4	12	50	90	90.41	32	24.2	21.58	12
			15	B3	8	18	22.5	26.66	56	23.01	11.52	10.43
<b>SB2-6015</b> <b>SB2-1560</b>		<b>m2</b>	60	B4	15	60	120	120.55	42	31.6	28.1	16
			15	B3	10	24	30	35.55	75	31.01	15.69	14.25
<b>SB2.5-6015</b> <b>SB2.5-1560</b>		<b>m2.5</b>	60	B4	20	70	150	150.69	53	40	35.63	20
			15	B3	12	30	37.5	44.44	94	39.02	19.87	18.06
<b>SB3-6015</b> <b>SB3-1560</b>		<b>m3</b>	60	B4	20	80	180	180.83	64	47.97	43.15	25
			15	B3	15	38	45	53.33	112	44.1	23.04	21.12
<b>SB4-6015</b> <b>SB4-1560</b>		<b>m4</b>	60	B5	25	85	240	241.1	80	59.2	52.2	36
			15	B3	16	50	60	71.10	150	62.03	31.39	28.75
<b>SBY5-6015</b> <b>SBY5-1560</b>		<b>m5</b>	60	BT	30	180	300	301.36	80	53.97	45.22	20
			15	B3	25	60	75	88.9	185	75.03	36.74	33.13
<b>SBY6-6015</b> <b>SBY6-1560</b>	<b>m6</b>	60	BT	35	200	360	361.66	100	68.16	58.31	25	
		15	B3	25	75	90	106.66	220	85.17	42.08	38.13	

[Caution on Product Characteristics]

- ① The allowable torques shown in the table are the calculated values according to the assumed usage conditions. Please see page 451 for more details.
- ② Dimensions of the outside diameter, the overall length and crown to back length are all theoretical values, and some differences will occur due to the corner chamfering of the gear tips.
- ③ For convenience in handling, BT Shaped Gears have tapped holes on their holding surface. To find the L dimensions and tap sizes, please refer to page 452.

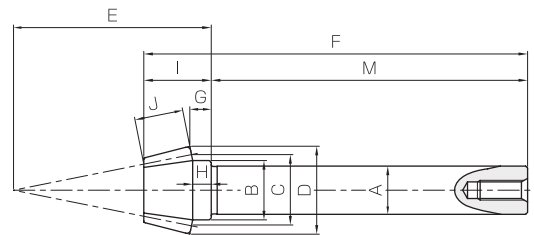


# SB Steel Bevel Gears & Pinion Shafts

Module 1.5 ~ 3



Specifications	
Precision grade	JIS B 1704 grade 3
Gear teeth	Gleason
Pressure angle	20°
Material	S45C
Heat treatment	—*
Tooth hardness	less than 194HB *



\* Pinions are thermal refined. The hardness of a gear tooth is 225 to 260HB.

B8

Catalog No.	Gear ratio	Module	No. of teeth	Shape	Bore · Shaft dia.	Hub dia.	Pitch dia.	Outside dia.	Mounting distance	Total length	Crown to back length	Hub width	Length of bore · shaft
					A <sub>H7(Bore)</sub> A <sub>H7(Shaft)</sub>	B	C	D	E	F	G	H	I
<b>SB1.5-6012</b> <b>SB1.5-1260</b>	5	<b>m1.5</b>	60	B4	12	50	90	90.33	30	23.89	21.82	12	21
			12	B8	12.2	15	18	22.24	50	97.06	5.42	4.7	17.06
<b>SB2-6012</b> <b>SB2-1260</b>		<b>m2</b>	60	B4	15	60	120	120.43	40	31.85	29.09	16	24
			12	B8	15.2	20	24	29.65	66	117.08	6.56	5.6	22.08
<b>SB2.5-6012</b> <b>SB2.5-1260</b>		<b>m2.5</b>	60	B4	20	70	150	150.54	50	39.81	36.36	20	34
			12	B8	20.2	25	30	37.06	83	143.1	8.7	7.5	28.1
<b>SB3-6012</b> <b>SB3-1260</b>		<b>m3</b>	60	B4	20	80	180	180.65	60	47.43	43.64	25	41
			12	B8	25.25	30	36	44.48	100	172.19	10.85	9.4	32.19

[Caution on Product Characteristics]

- ① The allowable torques shown in the table are the calculated values according to the assumed usage conditions. Please see page 451 for more details.
- ② Dimensions of the outside diameter, the overall length and crown to back length are all theoretical values, and some differences will occur due to the corner chamfering of the gear tips.