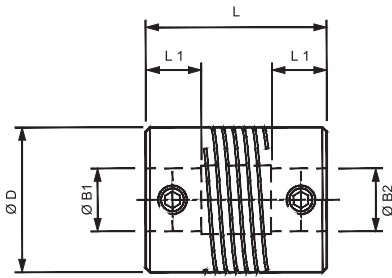
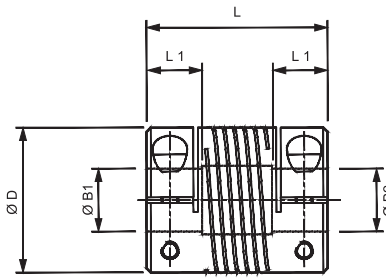


Aluminium Multi-Helix Flexible 3 Beam Couplings

Set Screw Hubs



Clamp Hubs



Materials & Finishes

Couplings: Aluminium L168 or better

Fasteners: Alloy steel, black oiled

Temperature Range

-40°F to +284°F

(-40°C to +120°C)

3-BEAM COUPLINGS: DIMENSIONS & ORDER CODES

Coupling Type & Size	Set Screw Style	Clamp Type	ØD in. (mm)	L in. (mm)	L1 in. (mm)	Bore Diameters			Mass kgx10 ⁻³	Fasteners				Angular Offset Deg.	Parallel Offset mm	Torsional Stiffness Nm/rad	Peak Torque lb.in (Nm)	
						Min B1	Min B2	Max B1 & B2		Set Screw	Cap Screw	Torgue lbs.-in. (Nm)	Wrench in. (mm)					
Relieved	6	724.06	—	.25 (6.4)	0.5 (12.7)	.13 (3.2)	1.0	2.0	3.0	0.7	M2	—	1.77 (0.2)	.035 (0.9)	3.0	.003 (.07)	1.53	354 (0.40)
	9	724.09	—	.37 (9.5)	.56 (14.2)	.18 (4.5)	2.0	3.0	3.18	2.2	M2.5	—	4.87 (0.55)	.051 (1.3)	3.0	.004 (0.1)	5.4	354.02 (0.40)
		—	725.09	—	—	—	—	—	—	—	—	M1.6	—	.059 (1.5)				
	13	724.13	—	0.5 (12.7)	.75 (19.1)	.24 (6.0)	3.0	4.0	5.0	5.0	M3	—	8.0 (0.90)	.059 (1.5)	5.0	.005 (.127)	28.0	796.57 (0.90)
		—	725.13	—	—	—	—	—	—	—	—	M2	—	.059 (1.5)				
	16	724.16	—	.63 (15.9)	.80 (20.3)	.26 (6.5)	3.0	4.0	6.35	8.2	M4	—	19.5 (2.2)	.079 (2.0)	5.0	.005 (.127)	38.0	13.28 (1.50)
		—	725.16	—	—	—	—	—	—	—	—	M2.5	—	.079 (2.0)				
	19	724.19	—	.75 (19.1)	.90 (22.9)	.26 (6.5)	4.0	4.76	8.0	12.8	M4	—	19.5 (2.2)	.079 (2.0)	5.0	.005 (.127)	65.0	22.13 (2.50)
—		725.19	—	—	—	—	—	—	—	—	M2.5	—	.079 (2.0)					
25	724.25	—	1.0 (25.4)	1.25 (31.8)	.35 (9.0)	5.0	6.0	10	32.6	M5	—	40.7 (4.6)	.098 (2.5)	5.0	.005 (.127)	121	35.4 (4.0)	
	—	725.25	—	—	—	—	—	—	—	—	M3	—	.098 (2.5)					
32	724.32	—	1.25 (31.8)	1.75 (44.5)	.47 (12.0)	6.0	8.0	14	70	M6	—	67.3 (7.6)	0.12 (3.0)	5.0	.005 (.127)	238	53.1 (8.0)	
	—	725.32	—	—	—	—	—	—	—	—	M4	—	0.12 (3.0)					

① Length of supported bore.

③ **Peak torque.** Select a size where Peak Torque exceeds the application torque x service factor. (see page 4)

② Max. compensation values are mutually exclusive.

BORE SIZES 3-BEAM COUPLINGS

Sizes indicated in parenthesis are metric (mm).

Coupling Size	ØB1, ØB2 +0.0012/ -0 (+0.03mm/-0mm)														
	(1)	(2)	(3)	1/8"	(4)	3/16"	(5)	(6)	1/4"	(8)	3/8"	(10)	(12)	1/2"	(14)
6	○	●	●												
9		○	●	●											
13			○	○	●	●	●								
16			○	○	●	●	●	●	●						
19					○	●	●	●	●	●					
25						○	●	●	●	●	●	●			
32							○	○	●	●	●	●	●	●	●
Bore ref.	8	11	14	16	18	19	20	22	24	28	31	32	35	36	38

○ B1 only

● B1 & B2