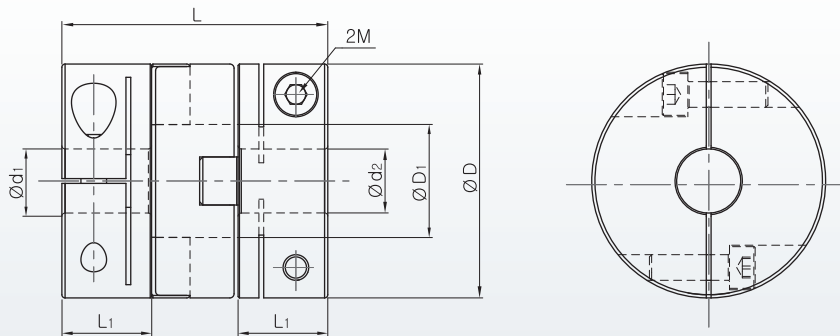


# SOH Series

## SOH Big Series Zero Backlash Oldham Coupling

### Features

- SOH Series Big size OLDHAM COUPLING
- Possible Inner Diameter Size :  $\phi 15 \sim \phi 60$
- High torque, High torsion rigidity
- Big parallel, angular, END-PLAY misalignment are absorbed simultaneously
- Double Clamp Type of Big Size
- Excellent balancing feature of perfect bilateral symmetry



Please refer to following spacer through size.

■ SOH-70C =  $\phi 35,3$

■ SOH-90C =  $\phi 40,5$

■ SOH-120C =  $\phi 50,5$

### Standards & Performance

Product Number	Dimension ( $\pm 0,3$ )				Fastening Bolt M	Fastening Torque (N · m)	Max. RPM ( $\text{min}^{-1}$ )	Max Torque (N · m)	Rated Torque (N · m)	Torsional Stiffness (N · m/rad)	Moment of Inertia ( $\text{kg} \cdot \text{m}^2$ )	Mass (g)	Errors of Misalignment		
	D	D <sub>1</sub>	L	L <sub>1</sub>									Angle (°)	Parallel (mm)	End-Play (mm)
SOH-70C	73	35,3	83	28	M8	30	3,000	130	65	2,000	$5,4 \times 10^{-4}$	670	1	5	0,4
SOH-90C	88	40,5	100	33,5	M10	50	2,800	210	105	2,500	$1,2 \times 10^{-3}$	1240	1	7	0,4
SOH-120C	118	50,5	141	40,5	M12	90	2,500	400	200	6,300	$6,5 \times 10^{-3}$	2600	1	7	0,6

### Standard Inner diameter

Product Number	Standard Inner diameter (d <sub>1</sub> , d <sub>2</sub> ) Standard INNER Diameter (mm)																					
	$\phi 15$	$\phi 16$	$\phi 18$	$\phi 19$	$\phi 20$	$\phi 22$	$\phi 24$	$\phi 25$	$\phi 28$	$\phi 30$	$\phi 32$	$\phi 34$	$\phi 35$	$\phi 40$	$\phi 42$	$\phi 45$	$\phi 50$	$\phi 52$	$\phi 55$	$\phi 58$	$\phi 60$	
SOH-70C	●	●	●	●	●	●	●	●	●	●	●	●	●	●								
SOH-90C	●	●	●	●	●	●	●	●	●	●	●	●	●	●	●	●						
SOH-120C								●	●	●	●	●	●	●	●	●	●	●	●	●	●	●

■ INNER diameter INCH type is also available

■ Non standard inner diameter product is also available