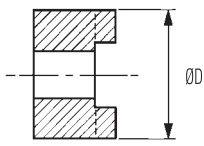
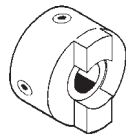


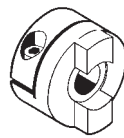
Aluminium Thro' Hubs



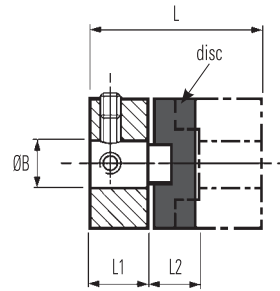
Thro' bores allow disc replacement without disturbing shaft alignment



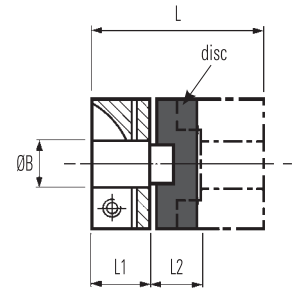
Set screw style



Clamp style



Refs. 450
Set screw style



Refs. 452
Clamp style

DIMENSIONS & ORDER CODES

Coupling Type and Size	Hub Ref		Dimensions								Fasteners			Disc Ref	
	Set Screw Style	Clamp Style	ØD in. (mm)	L in. (mm)	① L1 in. (mm)	② L2 in. (mm)	ØB1 Max in. (mm)	④ Moment of Inertia kgm ² x10 ⁻⁸	④ Mass kg x10 ⁻³	Size	③ Torque lb.-in (Nm)	Wrench in. (mm)	Acetal (black) Std.	Nylon 11 (Natural)	
Thro' Hubs	13	450H13	-	0.5 (12.7)	0.63 (15.9)	0.21 (5.5)	0.08 (1.7)	0.25 (6.35)	20	10	M3	8.32 (0.94)	0.06 (1.5)	236.13	238.13
	19	450H19	-	.75 (19.1)	1.02 (26.0)	0.37 (9.4)	0.28 (7.2)	0.31 (8)	59	13	M5	40.1 (4.62)	0.10 (2.5)	236.19	238.19
		-	452H19								M2.5	11.6 (1.32)	0.08 (2.0)		
	25	450H25	-	1.0 (25.4)	1.28 (32.4)	0.46 (11.6)	0.36 (9.2)	0.47 (12)	252	31	M5	40.9 (4.62)	0.10 (2.5)	236.25	238.25
		-	452H25								M3	21.5 (2.43)	0.10 (2.5)		
	33	450H33	-	1.31 (33.3)	1.65 (42.0)	0.59 (15.0)	0.47 (12.0)	0.63 (16)	1080	67	M6	67.4 (7.61)	0.12 (3.0)	836.33	838.33
		-	452H33								M4	50.1 (5.66)	0.12 (3.0)		
	41	450H41	-	1.62 (41.3)	2.0 (50.8)	0.70 (17.8)	0.60 (15.3)	0.79 (20)	3177	142	M6	67.4 (7.61)	0.12 (3.0)	236.41	238.41
-		452H41	M4								50.1 (5.66)	0.12 (3.0)			
50	450H50	-	1.97 (50.0)	2.35 (59.6)	0.81 (20.6)	0.72 (18.4)	1.0 (25.4)	7550	208	M8	162 (18.36)	0.16 (4.0)	236.50	-	
	-	452H50								M5	101 (11.40)	0.16 (4.0)			
57	450H57	-	2.25 (57.1)	3.07 (78.0)	1.12 (28.4)	0.83 (21.2)	1.18 (30)	12410	361	M8	162 (18.36)	0.16 (4.0)	236.57	-	
	-	452H57								M6	171 (19.34)	0.20 (5.0)			

PERFORMANCE (AT 20°C WITH STANDARD ACETAL DISC)

Coupling Size	⑤ Peak torque lbs.-in. (Nm)	⑥ Max compensation @ 3000 rpm			⑦ Torsional		Static break torque lbs.-in. (Nm)
		Angular deg	Radial in. (mm)	Axial in. (± mm)	Rate deg / Nm	Stiffness Nm / rad	
13	4.43 (0.5)	0.5	.004 (0.1)	.002 (0.05)	0.88	65	35.4 (4)
19	15.0 (1.7)		.008 (0.2)	.004 (0.1)	0.50	115	70.1 (8)
25	35.4 (4)		.008 (0.2)	.004 (0.1)	0.28	205	115 (13)
33	79.7 (9)		.008 (0.2)	.006 (0.15)	0.093	615	469 (53)
41	151 (17)		.01 (0.25)	.006 (0.15)	0.048	1200	504 (57)
50	266 (30)		.01 (0.25)	.008 (0.2)	0.042	1375	841 (95)
57	389 (44)		.01 (0.25)	.008 (0.2)	0.022	2610	1328 (150)

Materials Finishes

Hub sizes 13 to 57 : Al Alloy 2014A 16

Fasteners: Alloy steel, black oiled

Hubs: Clear anodised finish

IMPORTANT

Load capacity depends on application conditions:

STANDARD BORES® FOR ALL TYPES

Sizes indicated in parenthesis are metric (mm).

Coupling Size	ØB1, ØB2 +0.0012/ -0 (+0.03mm/-0mm)																							
	(2)	(3)	1/8" (4)	3/16" (5)	(6)	1/4" (8)	3/8" (10)	(12)	1/2" (14)	(15)	5/8" (16)	(18)	(19)	3/4" (20)	(24)	(25)	(30)							
13		•	•	•	•	•																		
19			•	•	•	•																		
25				•	•	•	•																	
33					•	•	•	•	•	•	•													
41						•	•	•	•	•	•	•	•	•	•									
50							•	•	•	•	•	•	•	•	•	•	•							
57								•	•	•	•	•	•	•	•	•	•							
Bore ref.	11	14	16	18	19	20	22	24	28	31	32	35	36	38	40	41	42	45	46	47	48	51	52	56