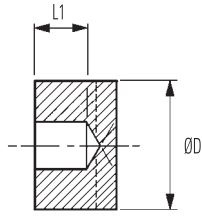
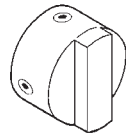


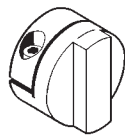
Brass / Aluminium Blind Hubs



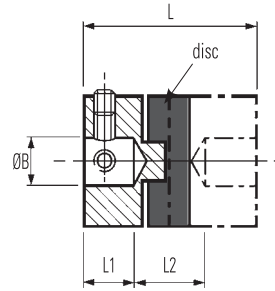
Controlled bore depth L1 provides a register when pre-assembling hubs to shafts



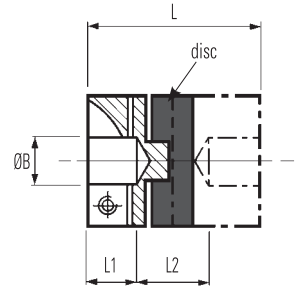
Set screw style



Clamp style



Refs. 232
Set screw style



Refs. 234
Clamp style

DIMENSIONS & ORDER CODES

Coupling Type and Size	Hub Ref		Dimensions								Fasteners			Disc Ref	
	Set Screw Style	Clamp Style	ØD in. (mm)	L in. (mm)	① L1 in. (mm)	② L2 in. (mm)	ØB1 Max in. (mm)	④ Moment of Inertia kgm ² x10 ⁻⁸	④ Mass kg x10 ⁻³	Size	③ Torque lb.-in (Nm)	Wrench in. (mm)	Acetal (black) Std.	Nylon 11 (Natural)	
Blind Hubs	06	232.06	-	.25 (6.4)	0.5 (12.7)	0.15 (3.8)	0.20 (5.1)	0.13 (3.18)	6	2.5	M3	8.32 (0.94)	0.06 (1.5)	236.06	238.06
	09	232.09	-	.37 (9.50)	0.5 (12.7)	0.15 (3.8)	0.20 (5.1)	0.20 (5)	18	4	M3	8.32 (0.94)	0.06 (1.5)	236.09	238.09
	13	232.13	-	0.5 (12.7)	0.63 (15.9)	0.17 (4.3)	0.29 (7.3)	0.25 (6.35)	26	11	M3	8.32 (0.94)	0.06 (1.5)	236.13	238.13
	19	232.19	-	.75 (19.1)	0.87 (22.0)	0.25 (6.3)	0.37 (9.4)	0.31 (8)	67	12	M3	8.32 (0.94)	0.06 (1.5)	236.19	238.19
		-	234.19								M2.5	11.6 (1.32)	0.08 (2.0)		
	25	232.25	-	1.0 (25.4)	.98 (28.4)	0.34 (8.6)	0.44 (11.2)	0.47 (12)	252	31	M4	20.1 (2.27)	0.08 (2.0)	236.25	238.25
		-	234.25								M3	21.5 (2.43)	0.10 (2.5)		
	33	232.33	-	1.31 (3.3)	1.65 (42.0)	0.51 (13.0)	0.63 (16.0)	0.63 (16)	1074	72	M5	40.9 (4.62)	0.06 (1.5)	836.33	838.33
	-	234.33								M4	20.6 (2.33)	0.08 (2.0)			
41	232.41	-	1.62 (41.3)	2.0 (50.8)	0.66 (16.7)	0.69 (17.4)	0.79 (20)	3327	148	M5	40.1 (4.62)	0.10 (2.5)	236.41	238.41	
	-	234.41								M4	50.1 (5.66)	0.12 (3.0)			

PERFORMANCE (AT 20°C WITH STANDARD ACETAL DISC)

Coupling Size	⑤ Peak torque lbs.-in. (Nm)	⑥ Max compensation @ 3000 rpm			⑦ Torsional		Static break torque lbs.-in. (Nm)
		Angular deg	Radial in. (mm)	Axial in. (± mm)	Rate deg / Nm	Stiffness Nm / rad	
06	0.53 (0.06)	0.5	.004 (0.1)	.002 (0.05)	5.7	10	6.2 (0.7)
09	1.90n (0.21)		.004 (0.1)	.002 (0.05)	1.9	30	17.8 (2)
13	4.43 (0.5)		.004 (0.1)	.002 (0.05)	0.88	65	35.4 (4)
19	15.0 (1.7)		.008 (0.2)	.004 (0.1)	0.50	115	70.1 (8)
25	35.4 (4)		.008 (0.2)	.004 (0.1)	0.28	205	115 (13)
33	79.7 (9)		.008 (0.2)	.006 (0.15)	0.093	615	469 (53)
41	151 (17)		.01 (0.25)	.006 (0.15)	0.048	1200	504 (57)

Materials & Finishes

Hubs sizes 06 to 13 : Brass BS 2874 CZ121

Hub sizes 19 to 41: Al Alloy 2014 16

Fasteners: Alloy steel, black oiled

Blind & black hubs: Irridite NCP finish

IMPORTANT

Load capacity depends on application conditions:

STANDARD BORES FOR ALL TYPES

Sizes indicated in parenthesis are metric (mm).

Coupling Size	ØB1, ØB2 +0.0012/ -0 (+0.03mm/-0mm)																							
	(2)	(3)	1/8" (4)	3/16" (5)	(6)	1/4" (8)	3/8" (10)	(12)	1/2" (14)	(15)	5/8" (16)	(18)	(19)	3/4" (20)	(24)	(25)	(30)							
06	•	•	•																					
09		•	•	•	•																			
13		•	•	•	•	•																		
19			•	•	•	•	•																	
25					•	•	•	•																
33						•	•	•	•	•	•	•												
41							•	•	•	•	•	•	•	•	•									
Bore ref.	11	14	16	18	19	20	22	24	28	31	32	35	36	38	40	41	42	45	46	47	48	51	52	56