



GEARHEADS(POWERFUL TYPE) Frame size 90mm sq. (3.54 in.sq.)

BALL BEARING TYPE

RATED TORQUE OF GEARHEAD

MODEL	Speed(rpm)	500	300	200	120	100	60	50	30	20	15	10	9	6	5	3	2	1	
	Ratio	50Hz	3	5	7.5	12.5	15	25	30	50	75	100	150	166.7	250	300	500	750	1500
		60Hz	3.6	6	9	15	18	30	36	60	90	120	180	200	300	360	600	900	1800
L9VK□B	kg-cm	16.5	27.5	41.3	62.1	74.5	112.2	134.6	200	200	200	200	200	200	200	200	200	200	
L9WK□B	N-m	1.62	2.70	4.05	6.08	7.30	11.00	13.19	19.60	19.60	19.60	19.60	19.60	19.60	19.60	19.60	19.60	19.60	
L9V10D(DECIMAL)	oz-in	229	382	574	862	1034	1558	1870	2777	2777	2777	2777	2777	2777	2777	2777	2777	2777	

With Decimal Gearhead

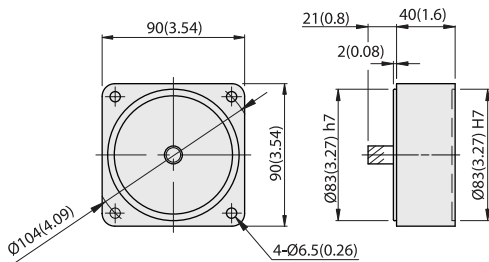
- * The normal torque is that the motor and gearhead are directly coupled.
- * Insert the denominator of reduction ratio in □ of gearhead model name.
- * Actual rotation speed is 2~15% less than synchronous speed.
- * ■ Color indicates that the rotation of gearhead shaft is in opposite direction as output shaft of motor.

DIMENSIONS

Unit : mm(inch)

DECIMAL GEARHEAD

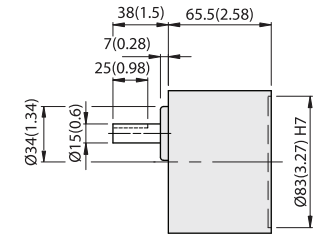
L9V10D



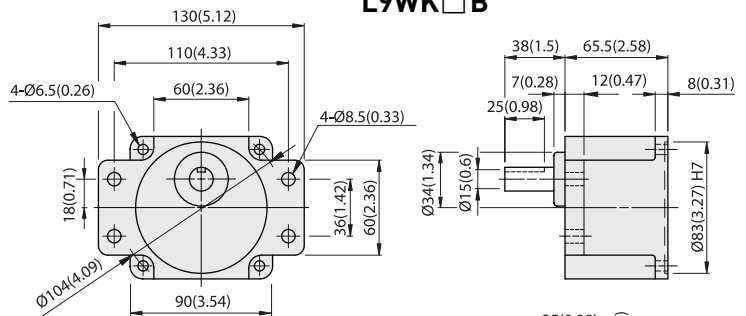
WEIGHT 0.6kg (1.3 lb)

GEARHEAD

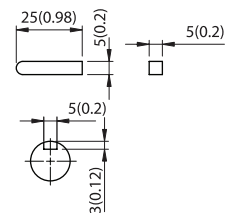
L9VK□B



L9WK□B

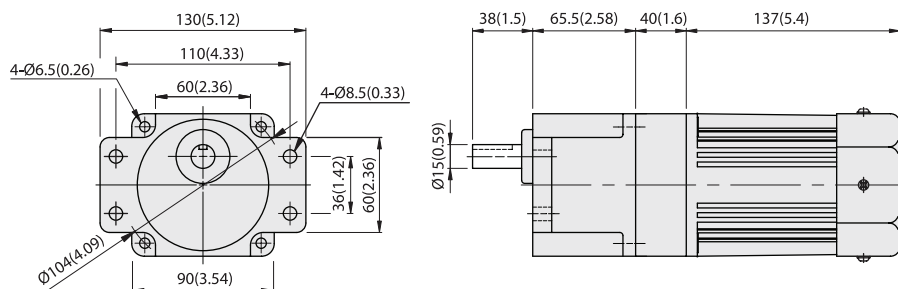


MODEL	GEAR RATIO	WEIGHT		BOLT
		kg	lb	
L9VK□B	1/3~1/200	1.5	3.3	M6x95
L9WK□B	1/3~1/200	1.6	3.5	M6xL25



KEY SIZE

L9WK□B + L9V10D + L9I90P□H



INDUCTION MOTORS