



90W (1/8 HP)

INDUCTION MOTORS Frame size 90mm sq. (3.54 in.sq.)

Single-Phase, Three-Phase

LEAD WIRE TYPE

SPECIFICATIONS

CONTINUOUS DUTY, INSULATION CLASS A or E, 4POLES

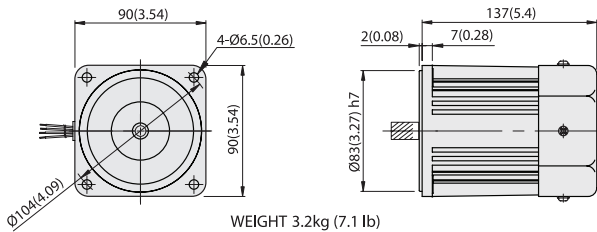
Model	Output		Voltage (V)	Frequency (Hz)	Rated						Starting Torque			Capacitor (μF)
	(HP)	(W)			Input (W)	Current (A)	Torque			Speed (rpm)	(kg-cm)	(N-m)	(oz-in)	
							(kg-cm)	(N-m)	(oz-in)					
L9190□C	1/8	90	1∅100	50 60	190 190	1.90 1.80	6.8 5.5	0.666 0.539	94.43 76.38	1300 1600	4.5 4.5	0.441 0.441	62.49 62.49	25
L9190□D	1/8	90	1∅200	50 60	190 190	0.80 0.92	6.8 5.5	0.666 0.539	94.43 76.38	1300 1600	5.4 5.4	0.529 0.529	74.99 74.99	7
L9190□B	1/8	90	1∅220	60	200	1.0	5.5	0.539	76.38	1600	5.1	0.500	70.82	6
L9190□E	1/8	90	1∅115	60	200	1.80	5.5	0.539	76.38	1600	4.5	0.441	62.49	20
L9190□X	1/8	90	1∅220~240	50	200	0.90	6.8	0.666	94.43	1300	5.1	0.500	70.82	6
L9190□U	1/8	90	3∅200	50 60	180 180	0.64 0.61	6.8 5.7	0.666 0.559	94.43 79.16	1300 1550	17 13	1.666 1.274	236.08 180.53	-
L9190□T	1/8	90	3∅200~230	50 60	180 180	0.66 0.63	6.5 5.5	0.637 0.539	90.27 76.38	1350 1600	19 15	1.862 1.470	263.85 208.30	-
L9190□S	1/8	90	3∅380~415	50 60	180 180	0.38 0.37	6.5 5.5	0.637 0.539	90.27 76.38	1350 1600	19 15	1.862 1.470	263.85 208.30	-
L9190□R	1/8	90	3∅440	50 60	180 180	0.34 0.32	6.5 5.5	0.637 0.539	90.27 76.38	1350 1600	19 15	1.862 1.470	263.85 208.30	-

- * Model in grey screen represents the motors with THERMALLY PROTECTED according to UL regulation.
- * Model in dark grey screen represents the motors with THERMALLY PROTECTED according to CE regulation.
- * In case of some models certificated for export, the special cord like CE or UL is added after the existing model no. ex) L9160□XH-CE, L9160□EH-UL.
- * Insulation class for motors which acquired certificates for export is B.

DIMENSIONS

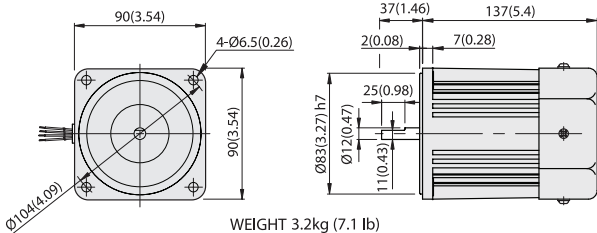
L9190P□H

Unit: mm(inch)



WEIGHT 3.2kg (7.1 lb)

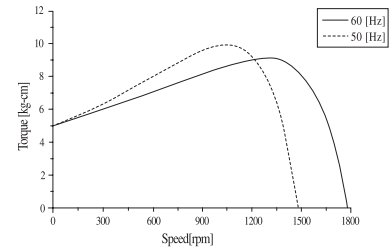
L9190D□



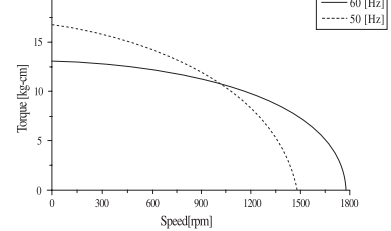
WEIGHT 3.2kg (7.1 lb)

SPEED-TORQUE CURVE

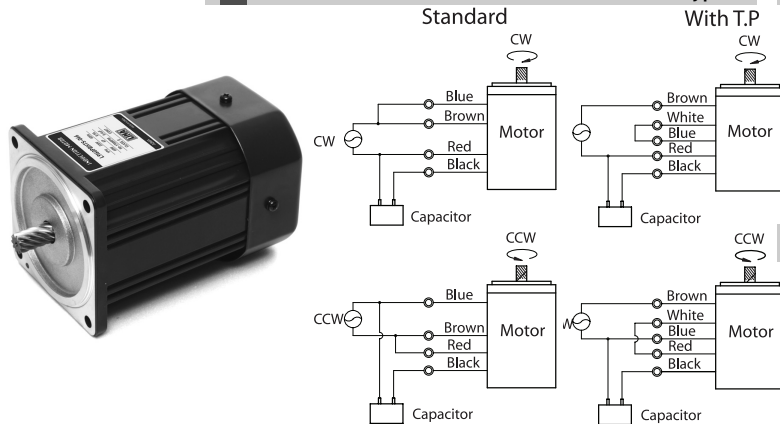
Single phase L9190□□



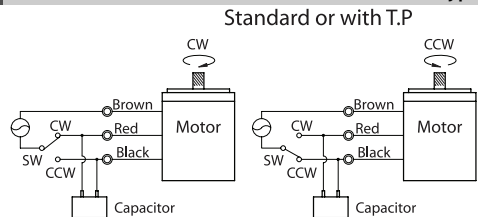
Three phase L9190□□



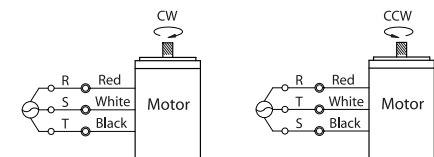
CONNECTION DIAGRAMS (4-lead wire type)



CONNECTION DIAGRAMS (3-lead wire type)



CONNECTION DIAGRAMS (3 phase)



The direction of rotation is seen from the end of motor shaft.