



**GEARHEADS** Frame size 90mm sq. (3.54 in. sq.)

METAL TYPE & BALL BEARING TYPE

▶ **RATED TORQUE OF GEARHEAD**

| MODEL                          | Speed(rpm) | 500  | 300  | 200  | 120  | 100  | 60   | 50   | 30   | 20   | 15   | 10   | 9    |       |
|--------------------------------|------------|------|------|------|------|------|------|------|------|------|------|------|------|-------|
|                                | Ratio      | 50Hz | 3    | 5    | 7.5  | 12.5 | 15   | 25   | 30   | 50   | 75   | 100  | 150  | 166.7 |
|                                |            | 60Hz | 3.6  | 6    | 9    | 15   | 18   | 30   | 36   | 60   | 90   | 120  | 180  | 200   |
| <b>L9HK□M</b><br><b>L9HK□B</b> | kg-cm      | 7.3  | 12.2 | 18.2 | 30.4 | 36.4 | 54.8 | 65.7 | 99.0 | 100  | 100  | 100  | 100  |       |
|                                | N-m        | 0.71 | 1.19 | 1.79 | 2.98 | 3.57 | 5.37 | 6.44 | 9.70 | 9.80 | 9.80 | 9.80 | 9.80 |       |
|                                | oz-in      | 101  | 169  | 253  | 422  | 506  | 760  | 912  | 1375 | 1389 | 1389 | 1389 | 1389 |       |

- \* The normal torque is that the motor and gearhead are directly coupled.
- \* Insert the denominator of reduction ratio in □ of gearhead model name.
- \* Actual rotation speed is 2~15% less than synchronous speed.
- \* ■Color indicates that the rotation of gearhead shaft is in opposite direction as output shaft of motor.

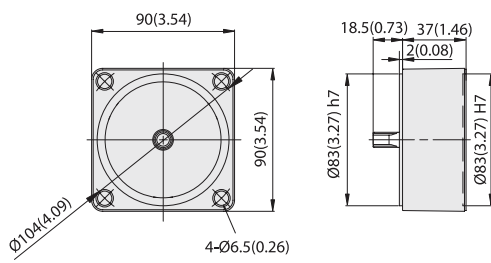
INDUCTION MOTORS

**DIMENSIONS**

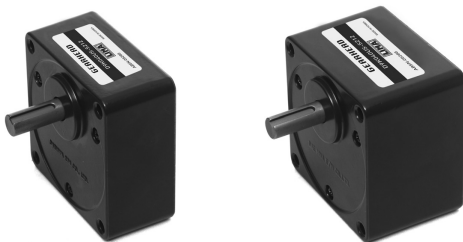
Unit : mm(inch)

**DECIMAL GEARHEAD**

**L9G10D**

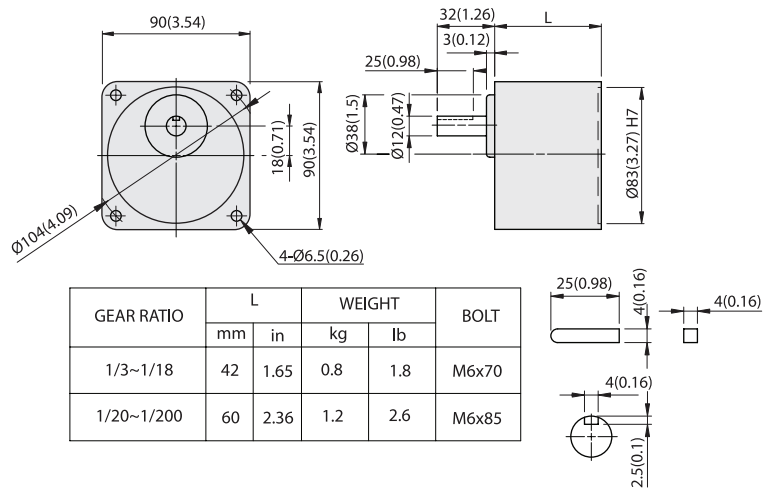


WEIGHT 0.6kg(1.3 lb)



**GEARHEAD**

**L9HK□M(B)**



KEY SIZE

**L9HK□M(B) + L9I40P□L**

