



# 40W (1/18.5 HP)

INDUCTION MOTORS Frame size 90mm sq. (3.54 in. sq.)

LEAD WIRE TYPE

## SPECIFICATIONS

CONTINUOUS DUTY, INSULATION CLASS A or E, 4POLES

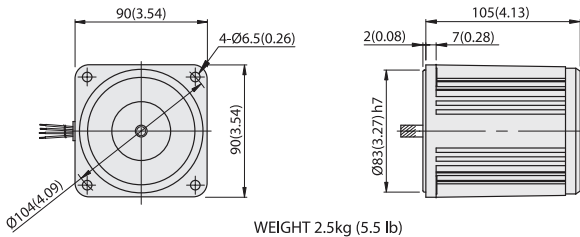
Model	Output		Voltage (V)	Frequency (Hz)	Rated						Starting Torque			Capacitor (μF)
	(HP)	(W)			Input (W)	Current (A)	Torque			Speed (rpm)	(kg-cm)	(N-m)	(oz-in)	
							(kg-cm)	(N-m)	(oz-in)					
L9140□C	1/18.5	40	1∅100	50 60	80 80	0.80 0.80	3 2.5	0.294 0.245	41.66 34.72	1300 1600	2 2	0.196 0.196	27.77 27.77	10
L9140□D	1/18.5	40	1∅200	50 60	80 80	0.40 0.40	3 2.5	0.294 0.245	41.66 34.72	1300 1600	2.4 2.4	0.235 0.235	33.33 33.33	3
L9140□B	1/18.5	40	1∅220	60	85	0.4	2.5	0.245	34.72	1600	2.4	0.235	33.33	2.5
L9140□E	1/18.5	40	1∅115	60	80	0.80	2.6	0.255	36.11	1550	2	0.196	27.77	8
L9140□X	1/18.5	40	1∅220~240	50	90	0.45	3	0.294	41.66	1300	2.7	0.265	37.49	2.5
L9140□U	1/18.5	40	3∅200	50 60	100 100	0.33 0.32	3 2.6	0.294 0.255	41.66 36.11	1300 1550	8.75 6.5	0.858 0.637	121.51 90.27	-
L9140□T	1/18.5	40	3∅200~230	50 60	100 100	0.38 0.32	2.9 2.5	0.284 0.245	40.27 34.72	1350 1600	11 8.5	1.078 0.833	152.76 118.04	-
L9140□S	1/18.5	40	3∅380~415	50 60	100 100	0.22 0.19	2.9 2.5	0.284 0.245	40.27 34.72	1350 1600	11 8.5	1.078 0.833	152.76 118.04	-
L9140□R	1/18.5	40	3∅440	50 60	100 100	0.19 0.16	2.9 2.5	0.284 0.245	40.27 34.72	1350 1600	11 8.5	1.078 0.833	152.76 118.04	-

- \* Model in grey screen represents the motors with THERMALLY PROTECTED according to UL regulation.
- \* Model in dark grey screen represents the motors with THERMALLY PROTECTED according to CE regulation.
- \* In case of some models certificated for export, the special cord like CE or UL is added after the existing model no. ex) L9160□XH-CE, L9160□EH-UL.
- \* Insulation class for motors which acquired certificates for export is B.

## DIMENSIONS

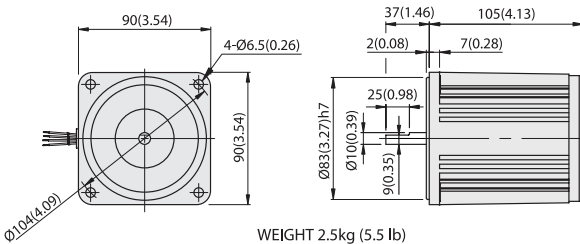
### L9140P□L

Unit : mm(inch)



WEIGHT 2.5kg (5.5 lb)

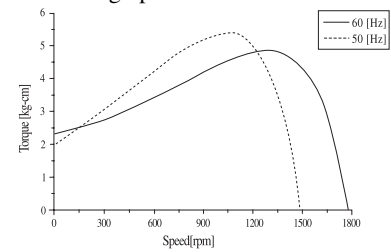
### L9140D□



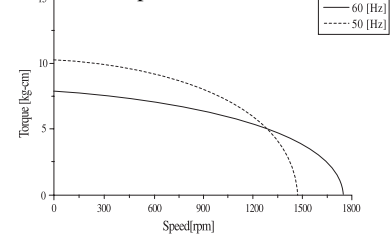
WEIGHT 2.5kg (5.5 lb)

## SPEED-TORQUE CURVE

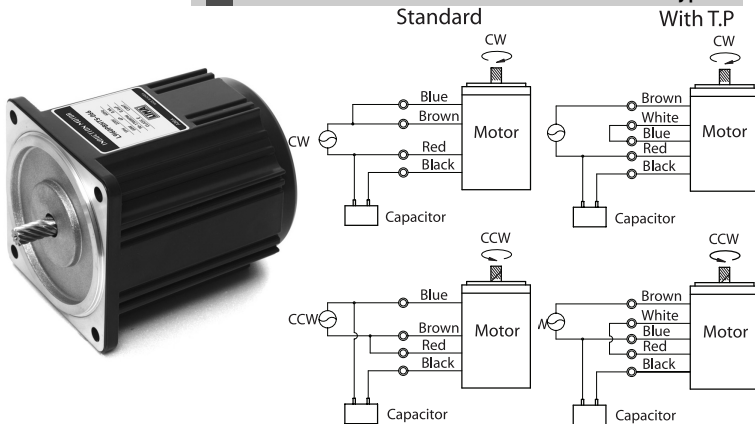
### Single phase L9140□□



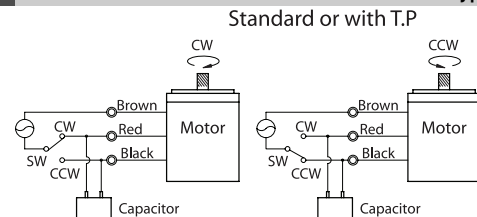
### Three phase L9140□□



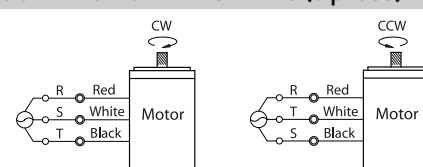
## CONNECTION DIAGRAMS (4-lead wire type)



## CONNECTION DIAGRAMS (3-lead wire type)



## CONNECTION DIAGRAMS (3 phase)



The direction of rotation is seen from the end of motor shaft.