



GEARHEADS Frame size 61mm sq. (2.4 in.sq.)

METAL TYPE & BALL BEARING TYPE

▶ **RATED TORQUE OF GEARHEAD**

MODEL	Speed(rpm)	500	300	200	120	100	60	50	30	20	15	10	9
	Ratio	50Hz	3	5	7.5	12.5	15	25	30	50	75	100	150
60Hz		3.6	6	9	15	18	30	36	60	90	120	180	200
L6HD□M L6HD□B	kg-cm	1.1	1.9	2.9	4.8	5.7	8.6	10.3	15.5	23.3	30	30	30
	N-m	0.11	0.19	0.28	0.47	0.56	0.84	1.01	1.52	2.28	2.94	2.94	2.94
	oz-in	16	26	40	66	79	119	143	215	323	417	417	417

- * The normal torque is that the motor and gearhead are directly coupled.
- * Insert the denominator of reduction ratio in □ of gearhead model name.
- * Actual rotation speed is 2~15% less than synchronous speed.
- * ■Color indicates that the rotation of gearhead shaft is in opposite direction as output shaft of motor.

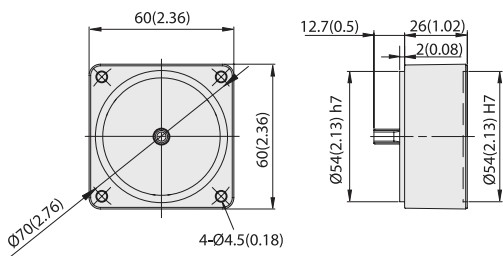
INDUCTION MOTORS

DIMENSIONS

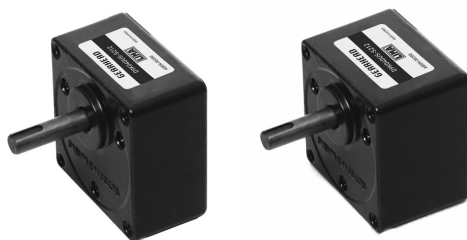
Unit : mm(inch)

DECIMAL GEARHEAD

L6G10D

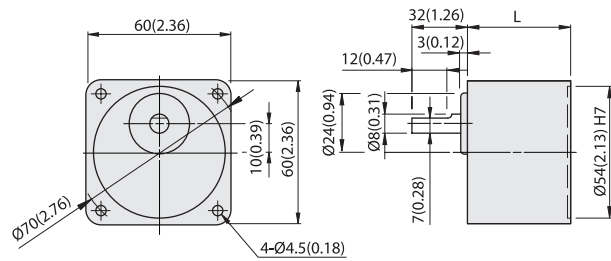


WEIGHT 0.2kg(0.44 lb)



GEARHEAD

L6HD□ M(B)



GEAR RATIO	L		WEIGHT		BOLT
	mm	in	kg	lb	
1/3~1/18	30	1.18	0.3	0.66	M4x50
1/20~1/200	41	1.57	0.4	0.88	M4x60

L6HD□ M(B) + L616P□ L

