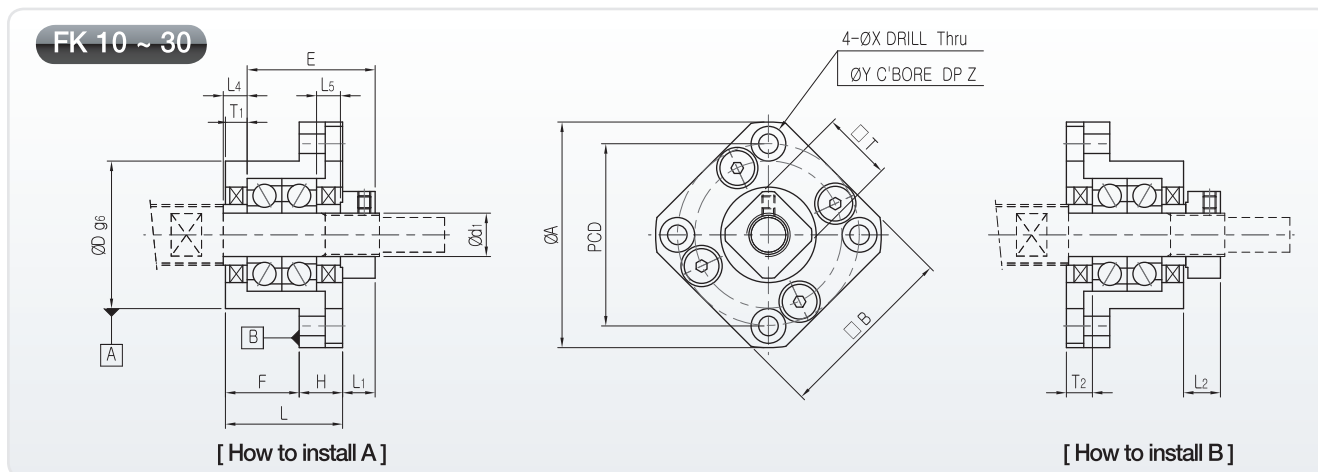
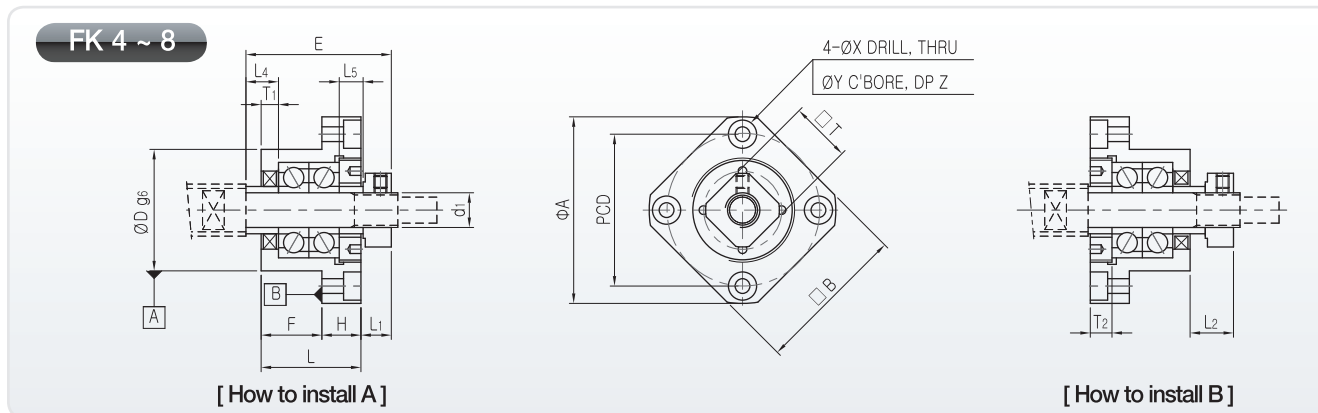
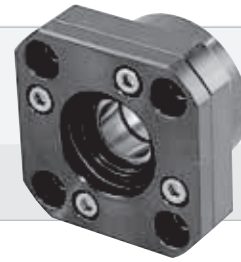


FK Type Support Unit

Round Type for Fixture



Note

1. Installation can be conducted based on the surface of A and B. Please, use the spacer of accurate size when adjustment of height or length is necessary.
2. It is not allowed to disassemble the support unit as the preload of the bearing has been already controlled.
3. Precise amount of grease is filled in the support unit.
4. Tighten the setscrew after connecting the locknut to ball screw and performing adjustment.
5. Please refer to page 55 about bearing type and characteristic according to Support Unit grade
6. Please refer to page 60 about attachment torque of the lock nut.

Unit : mm

Model No.	d ₁	L	H	F	E	D	A	PCD	□B	How to install A		How to install B		X	Y	Z	Collar Size		□T	Mess(g)
										L ₁	T ₁	L ₂	T ₂				L ₄	L ₅		
FK4	4	15	6	9	22	18	32	24	25	5,5	2	6,5	3	3,4	6	4	3,5	3,5	10	40
FK5	5	16,5	6	10,5	24	20	34	26	26	6,5	3,5	6	3	3,4	6,5	4	4,5	4,5	11	50
FK6	6	20	7	13	29	22	36	28	28	5,5	3,5	8,5	4,5	3,4	6,5	4	7	5	12	65
FK8	8	23	9	14	33,5	28	43	35	35	7	4	10	5	3,4	6,5	4	7,5	5,5	14	125
FK10	10	27	10	17	29,5	34	52	42	42	7,5	5	8,5	6	4,5	8	4	5,5	5,5	16	200
FK12	12	27	10	17	29,5	36	54	44	44	7,5	5	8,5	6	4,5	8	4	5,5	5,5	19	225
FK15	15	32	15	17	36	40	63	50	52	10	6	12	8	5,5	9,5	6	10	10	22	340
FK17	17	45	22	23	46	50	77	62	61	10	9	13	12	6,6	11	10	9	9	24	770
FK20	20	52	22	30	50	57	85	70	68	8	10	12	14	6,6	11	10	11	11	30	1065
FK25	25	57	27	30	60	63	98	80	79	13	10	20	17	9	15	13	15	15	35	1465
FK30	30	62	30	32	61	75	117	95	93	11	12	17	18	11	17,5	15	9	9	40	2300